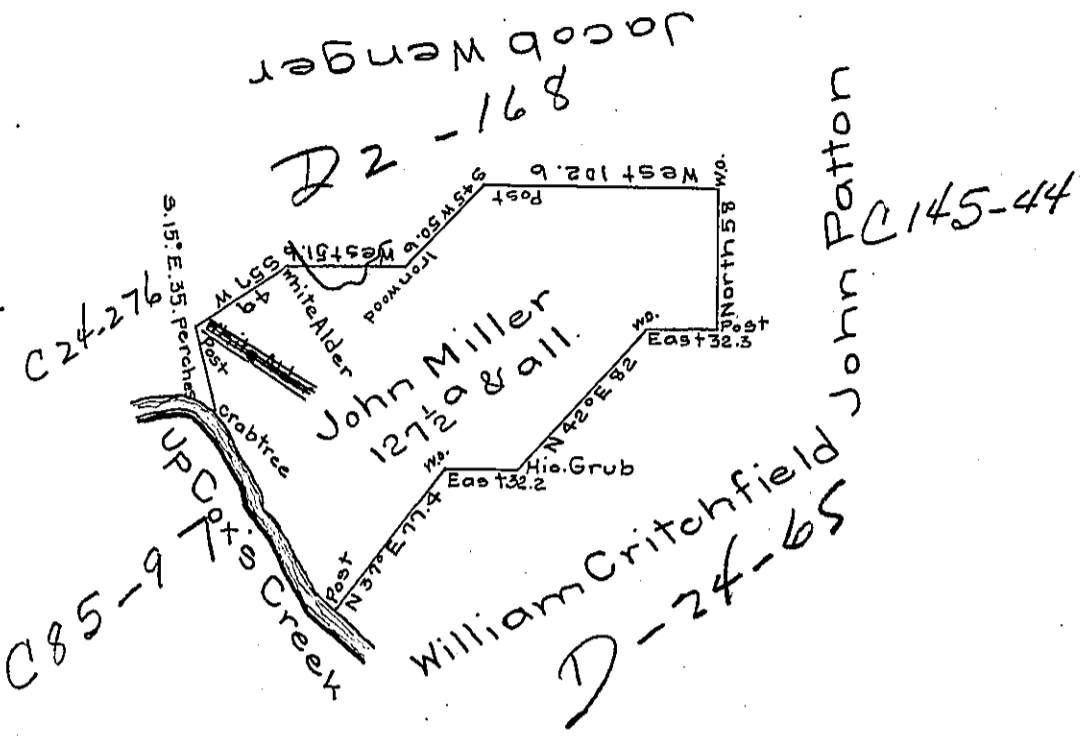


C<sup>s</sup> & D<sup>s</sup> up Cox's Creek  
 from the Crab tree  
 S 24° E 27 perches  
 S 36° E 76 D<sup>s</sup> to the post  
 103 perches



Situated on the North side of Cox's creek in  
 Milford township Bedford County and surveyed  
 the 9<sup>th</sup>. day of June 1785 in pursuance of a war-  
 rant dated the 17<sup>th</sup>. day of March 1775.

To Daniel Brodhead Esquire } Alexander M<sup>c</sup>Clean  
 Surveyor General } Deputy

*IN TESTIMONY* that the above is a copy of the original remaining on file in  
 the Department of Internal Affairs of Pennsylvania, made  
 conformably to an Act of Assembly approved the 16th day of  
 February, 1833, I have hereunto set my Hand and caused  
 the Seal of said Department to be affixed at Harrisburg,  
 this twentieth day of December 1905

*Isaac R. Brown*  
 Secretary of Internal Affairs.